

Disclaimers: All figures given in these tables are estimates only due to possible shrinkage in the molding processes. If dimensions are critical in your applications, please re-confirm with manufacturer.

OPTIONAL FITTINGS

AE - Dosing Tank

	Model	Dia	Ht.	Rim Volume		Total Volume	
		mm	mm	litres	gals	litres	gals
1)	AE-200	630	780	190	42	230	51
2)	AE-320	555-630	1230	300	66	340	75



C-DT Tank - with dome base

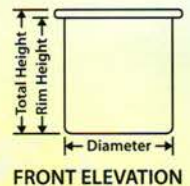
	Model	Dia	Total Ht.	Total Volume	
		mm	mm	litres	gals
1)	CD-T 1200	1160	1370	1209	266
2)	CD-T 1500	1160	1955	1809	398
3)	CD-T 2000	1160	2440	2311	508
4)	CD-T 2500	1500	1585	2631	578
5)	CD-T 3200	1500	1935	3219	707
6)	CD-T 4500	1790	1950	4556	1001
7)	CD-T 5000	1500	3220	5390	1185
8)	CD-T 6500	1885	2495	6503	1429

CCT Tank - with conical base

	Model	Dia	Ht.	Cone Volume		Total Volume	
		mm	mm	litres	gals	litres	gals
1)	C-CT 1200	1160	1430	107	24	1200	264
2)	C-CT 1500	1160	2020	107	24	1832	403
3)	C-CT 2000	1160	2505	107	24	2335	514
4)	C-CT 2800	1500	2310	410	90	3094	680
5)	C-CT 3500	1500	2645	410	90	3500	770
6)	C-CT 5300	1500	3945	410	90	5000	1100

CGD Tank - with loose cover S.G. = 1.5

	Model	Dia	Total Ht.	Rim Ht.	Rim Volume		Standard Accessories
		mm	mm	mm	litres	gals	
1)	CGD 25	230	600	590	25	5	Loose Cover
2)	CGD 70	350	780	725	70	15	Loose Cover
3)	CGD 100	430	715	680	99	22	Loose Cover
4)	CGD 150	500	850	785	154	34	Loose Cover
5)	CGD 200	500	1035	985	193	43	Loose Cover
6)	CGD 250	600	960	890	252	55	Loose Cover
7)	CGD 270	650-550	1030	995	292	62	Loose Cover
8)	CGD 350	870	645	570	339	75	Loose Cover
9)	CGD 450	870	880	820	488	107	Loose Cover
10)	CGD 650	775	1635	1555	734	161	Loose Cover
11)	CGD 800	820	1650	1560	824	181	Loose Cover
12)	CGD 900	870	1760	1685	1002	220	Loose Cover
13)	CGD 1000	1160	1170	1080	1142	251	Loose Cover
14)	CGD 1500	1160	1755	1655	1749	385	Loose Cover
15)	CGD 2000	1160	2240	2135	2257	496	Loose Cover
16)	CGD 2500	1500	1525	1400	2474	544	Loose Cover
17)	CGD 3200	1500	1870	1760	3111	684	Loose Cover
18)	CGD 4500	1790	1785	1730	4354	958	Loose Cover
19)	CGD 5000	1500	3115	3005	5311	1168	Loose Cover
20)	CGD 6500	1885	2350	2300	6419	1412	Loose Cover
21)	CGD 7000	1790	3070	3022	7606	1673	Loose Cover
22)	COT 7000	3000	1020	970	6857	1508	Loose Cover



AE Model

TOP VIEW

FRONT ELEVATION

OTHER PRODUCTS



Anchor Enviro Products Pte Ltd

14 Arumugam Road #04-01B Lion Building C Singapore 409959

Tel: (65) 6545 3220 Fax: (65) 6545 3289 Website : www.anchorenviro.com Email: anchorenviro@pacific.net.sg



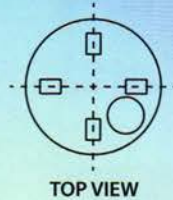
**Anchor Enviro
Products Pte Ltd**

Anchor Enviro Products Pte Ltd has been supplying Polyethylene (PE) chemical and water tanks (bulk container) and many customize products since 1998.

With many years of experience behind us we are sure that we can provide the best products and services. We provide total solutions with wide range of moulds to cater to your specific needs.

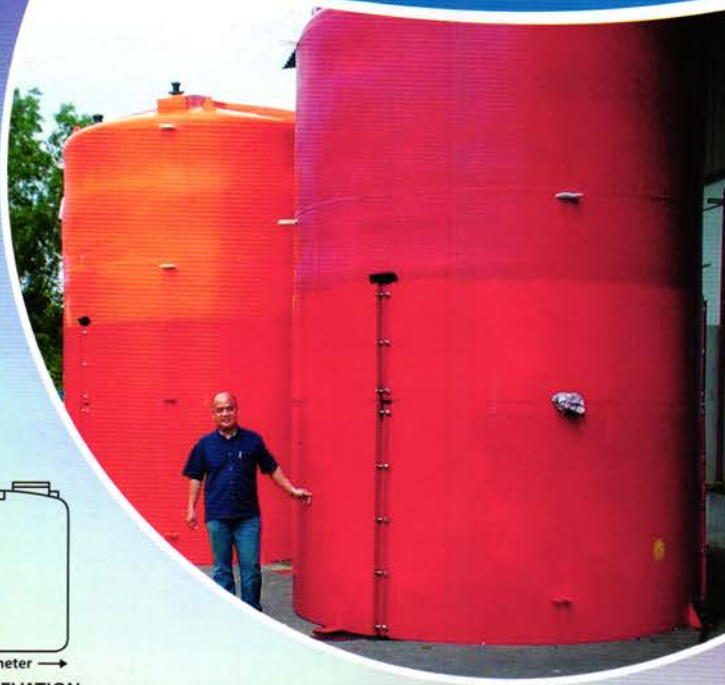
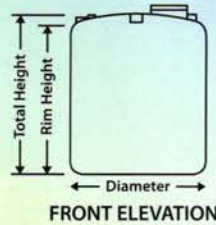
Our Mission

To provide Quality products and Excellent services and solution to our customers.



Our Vision

To be the number one supplier and innovator for supplying of Good and Quality products in the region and reaching out to the world market.



CPE Tank - with dome top
S.G = 1.5

	Model	Dia	Total Ht.	Rim Ht.	Rim Volume		Total Volume		Standard Accessories
		mm	mm	mm	litres	gals	litres	gals	
1)	CPE-400	870	720	630	375	82	402	88	270mm s cap
2)	CPE-600	870	950	860	511	112	538	118	270mm s cap
3)	CPE-1000	870	2075	1985	1180	260	1207	266	450mm m/hole
4)	CPE-1200	1160	1240	1125	1189	262	1251	275	450mm m/hole
5)	CPE-1500	1160	1825	1680	1776	391	1854	408	450mm m/hole
6)	CPE-1800	1380	1360	1225	1832	403	1935	426	450mm m/hole
7)	CPE-2000	1160	2355	2240	2368	521	2429	534	450mm m/hole
8)	CPE-2500	1500	1600	1430	2527	556	2680	590	450mm m/hole
9)	CPE-3200	1500	1940	1770	3128	688	3281	722	450mm m/hole
10)	CPE-4500	1790	1950	1750	4404	969	4660	1025	450mm m/hole
11)	CPE-5000	1500	3190	3020	5337	1174	5490	1208	450mm m/hole
12)	CPE-6500	1885	2500	2280	6364	1400	6676	1469	450mm m/hole
13)	CPE-7500	1790	3200	3000	7550	1661	7806	1717	450mm m/hole
14)	CPE-8000	3000	1435	980	6928	1524	8586	1889	450mm moulded threaded m/hole
15)	CPE-8500	2320	2280	1910	8075	1776	8884	1954	450mm moulded threaded m/hole
16)	CPE-9000	3000	1550	1060	7494	1648	9287	2043	450mm moulded threaded m/hole
17)	CPE-10000S	1885	3790	3575	9978	2195	10283	2262	450mm moulded threaded m/hole
18)	CPE-10000M	2320	2600	2290	9682	2130	10353	2277	450mm moulded threaded m/hole
19)	CPE-10000L	2320	2915	2500	10570	2325	11484	2526	450mm moulded threaded m/hole
20)	CPE-11000	3000	1890	1435	10145	2232	11802	2596	450mm moulded threaded m/hole
21)	CPE-12000	3000	2055	1600	11311	2488	12969	2853	450mm moulded threaded m/hole
22)	CPE-13000	2320	3200	2830	11965	2632	12774	2810	450mm moulded threaded m/hole
23)	CPE-13750	2545	2900	2630	13381	2943	14075	3097	450mm moulded threaded m/hole
24)	CPE-16000	3000	2610	2260	15977	3515	17237	3792	450mm moulded threaded m/hole
25)	CPE-18000	2320	4615	4245	17947	3948	18756	4126	450mm moulded threaded m/hole
26)	CPE-21000	3000	3345	2920	20643	4541	22185	4880	450mm moulded threaded m/hole
27)	CPE-23500	2545	4760	4480	22793	5014	23517	5173	450mm m/hole
28)	CPE-25000	3000	3855	3430	24248	5334	25791	5673	450mm moulded threaded m/hole
29)	CPE-28000	2545	5930	5730	29153	6413	29665	6526	450mm m/hole
30)	CPE-30000	3000	4730	4250	30045	6609	31800	6995	450mm moulded threaded m/hole
31)	CPE-31000	3500	3140	2870	27616	6075	28926	6363	450mm moulded threaded m/hole
32)	CPE-33000	3000	5170	4715	33333	7332	34990	7697	450mm moulded threaded m/hole
33)	CPE-40000	3000	5850	5585	39483	8685	40430	8893	450mm moulded threaded m/hole